

# Arizona Community Educator Initiative



Monique Reveles  
Mary Lou Fulton Teachers College  
August 2023



**Korbi  
Adams**

**Senior Program Manager,  
Next Education  
Workforce**



**Mishara  
Cruz**

**Program Manager,  
Next Education  
Workforce**



**Monique  
Reveles**

**Program Manager,  
Next Education  
Workforce**

**Hello!**

# Community educators

Community educators are youth-serving professionals and volunteers who **provide capacity and insight in service of deepening and personalizing student learning.**

They enrich learning environments by forging authentic relationships, sharing expertise and expanding networks.



# Next Education Workforce™

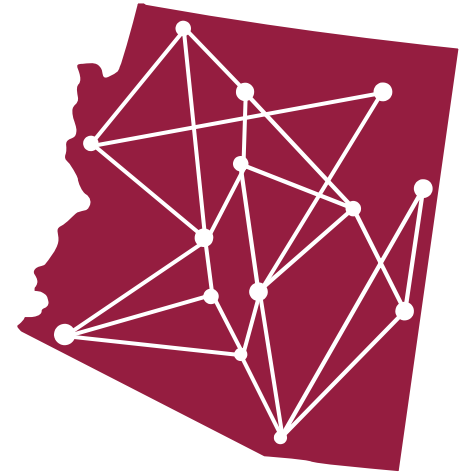
Arizona Community Educator Initiative

# ASU charter

ASU is a comprehensive public research university, measured not by whom it excludes, but **by whom it includes** and how they succeed; advancing research and discovery of public value; and assuming fundamental responsibility for the economic, social, cultural and overall **health of the communities** it serves.

# AZCE

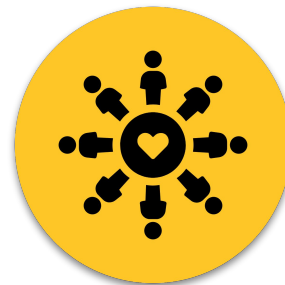
The Arizona Community Educator initiative (AZCE), is designed to increase the number, coordination, and impact of community educators working with Arizona learners.



# Dual-capacity building



**Engaging schools:** we engage with school systems, leaders and educators to build the skills and mindsets to partner with community educators in impactful ways.



**Supporting community educators:** to be ready to take on meaningful roles within schools and to answer the call for people-powered supports for students.

# Resources





# Community Collaboration Summit



We are proud to be a recipient of the National Partnership for Student Success Support Hub Community Collaboration Challenge!

**Focus:** Bringing community together to increase access to people-powered and evidence-based student supports



- Educators
- Business professionals
- Youth professionals
- Community-based organizations



- Arizona Western College  
[The Schoening Conference Center: building 3C](#)



NATIONAL PARTNERSHIP  
FOR *Student Success*



# Community-to-School Directory

Connect with local organizations ready to support learning

[Find organizations](#)



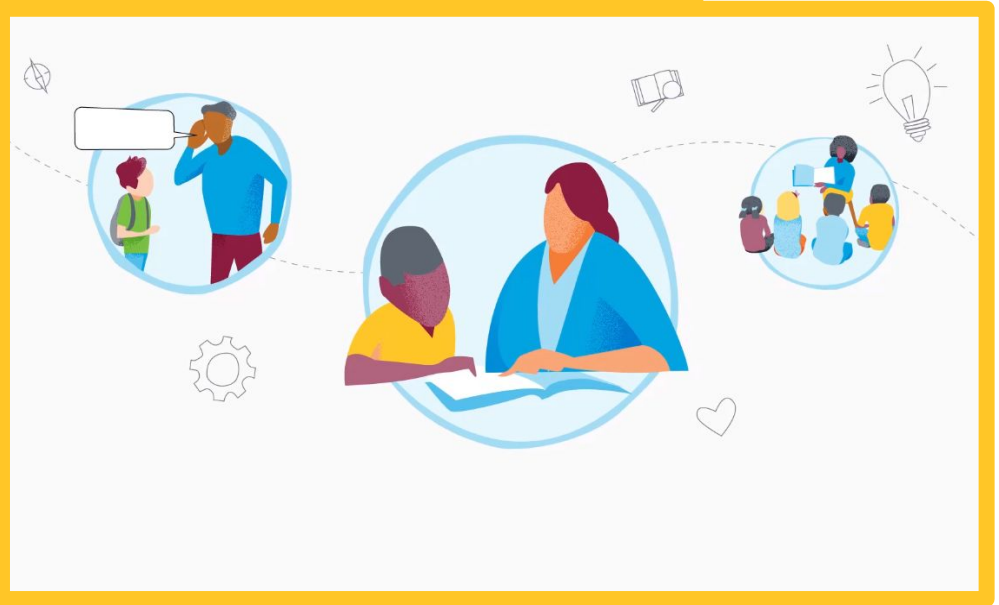
[Home](#) / [Community-to-School Directory](#)

Enrich your learning environment with community educators. Search the directory to find Arizona community-based organizations or businesses ready to partner with teachers and schools.

# Community Educator Learning Hub

# On-demand training

Liberating the content from the teachers college out into the community through highly accessible on-demand training.



# Community educator nanocourses

- Over 60 courses filled with actionable strategies
- Packaged in bundles based on categories such as teaching math, reading acceleration and more



## Facilitate Small Group & Guided Reading

This course prepares you to work with small reading groups and guided reading with students from grades K-6.



Lindsey Moses

FREE



## Inclusive Language



Jill Wendt

FREE

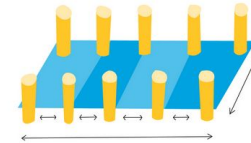


## Estrategias de lectura y desarrollo de vocabulario



Alexandria Estr...

FREE



## Represent Math Ideas

This course provides an overview of how you can help kids create and use representations to organize, record, an...



Mary Lou Fulton...

FREE



## Practice Modeling and Redirecting

This course teaches you strategies for how to model positive behaviors in the classroom and redirect distractions whe...



Mary Lou Fulto...

FREE



## Child Development



Jill Wendt

FREE

# Big ideas in tiny tips

These courses take the competencies of teaching and learning and break them down into easy to understand tips.

More than just activities to try, our courses share tools that can be applied in multiple learning environments.

The screenshot shows a course navigation menu for 'Apply Word Solving Strategies'. At the top, there is a progress bar that is 14% complete. Below the progress bar, the course title 'Apply Word Solving Strategies' is displayed. The menu is organized into sections: 'Welcome', 'Tips and Strategies', and 'Course Summary'. Under 'Welcome', there is one item: 'About this Course and What You'll Learn' with a checkmark icon. Under 'Tips and Strategies', there are five items: 'Tip 1: Let them Try' (selected with a half-filled circle), 'Tip 2: Decode by Analogy', 'Tip 3: Use Meaning', 'Tip 4: Recognize High Frequency "Sight" Words', and 'Tip 5: Cross-Check'. Under 'Course Summary', there is one item: 'What You Learned in this Course'.

## Apply Word Solving Strategies

14% COMPLETE

### Welcome

- ✓ About this Course and What You'll Learn

### Tips and Strategies

- ◐ Tip 1: Let them Try
- Tip 2: Decode by Analogy
- Tip 3: Use Meaning
- Tip 4: Recognize High Frequency "Sight" Words
- Tip 5: Cross-Check

### Course Summary

- What You Learned in this Course

# Coursework designed to activate a volunteer workforce



- Bite sized – easy user experience
- Immediately usable
- Highly visual and engaging
- Written in plain language
- Relevant topics based on real tips teachers use in classrooms everyday
- Curated groupings of bundles to build skill-sets for particular community educator roles
- Courses available in Spanish & English



# Questions?

## Arizona Community Educator Initiative

Contact us at

[korbi.adams@asu.edu](mailto:korbi.adams@asu.edu)

[mishara.cruz@asu.edu](mailto:mishara.cruz@asu.edu)

[monique.reveles@asu.edu](mailto:monique.reveles@asu.edu)



# Monique Reveles

Program Manager  
Next Education Workforce  
Mary Lou Fulton Teachers College

[monique.reveles@asu.edu](mailto:monique.reveles@asu.edu)

